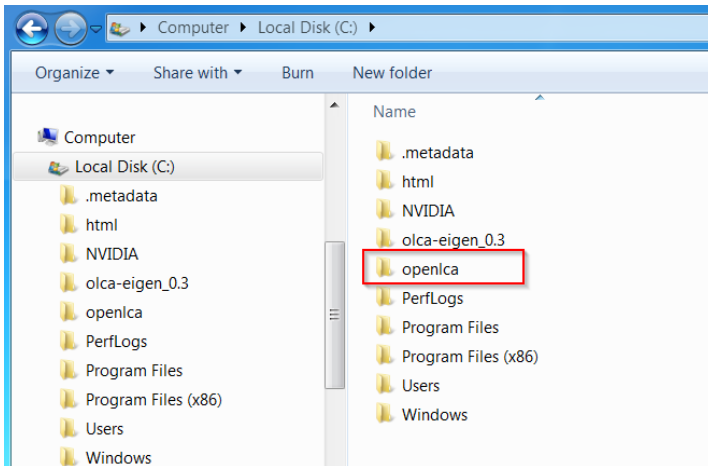


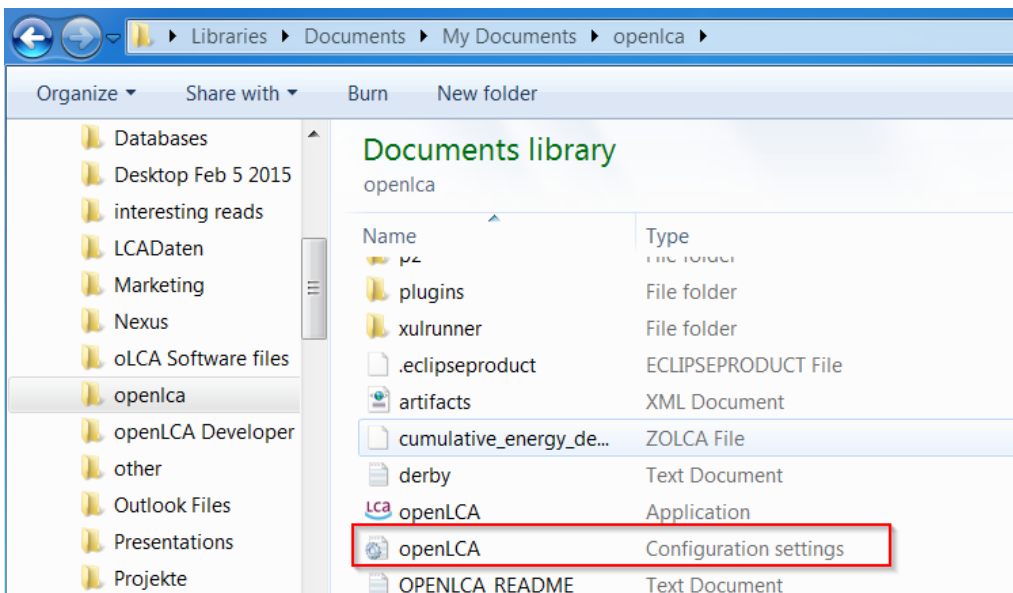
Instructions: Changing the location of databases for openLCA

As per default, openLCA databases are saved in a file under “Users” (file name: openLCA-data-1.4). To set a new location for the database start by creating a new file on the C drive where you want to have the data saved in the future. Then, you can edit the "openLCA.ini" file contained in the openLCA folder with a text editor (e.g. Notepad, etc.) to direct the databases there.

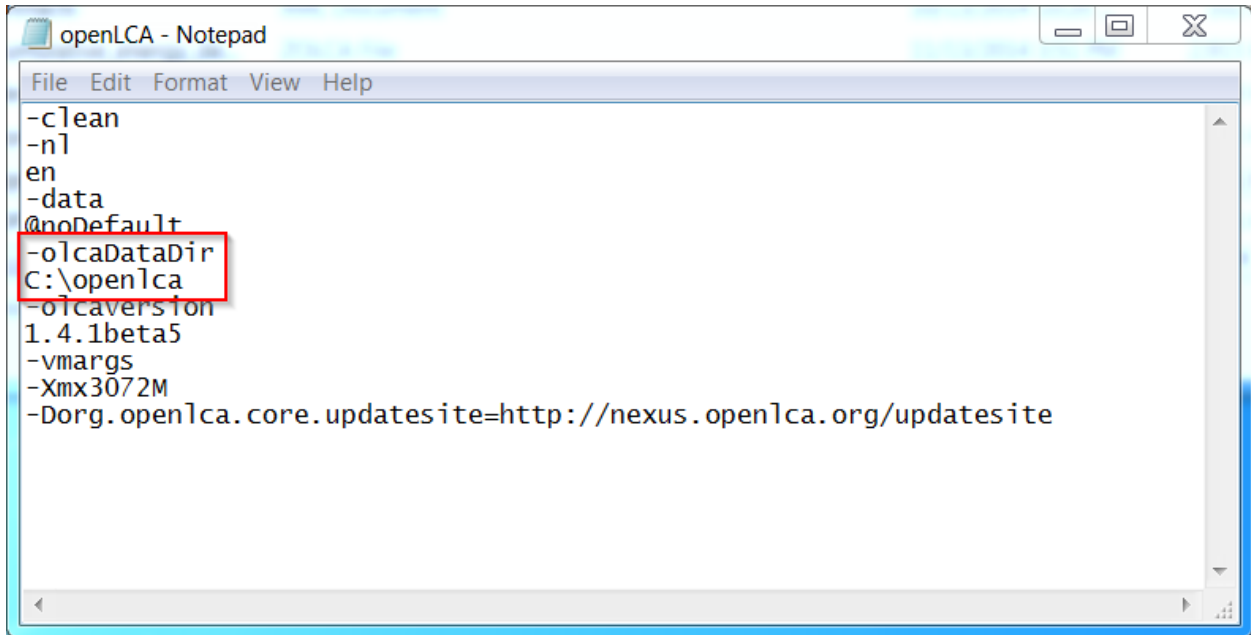
1 Create new folder in local disk (e.g. C:):



2 Find the .ini file in the openLCA program folder and open it with notepad or a similar program:



- 3 Change the file by adding two new lines. first line: '-olcaDatDir' ; second line: 'full directory path of new folder'. The directory can't be only C:\, it needs to be in a folder (e.g. C:\openlca):



```
File Edit Format View Help
-clean
-nl
en
-data
@noDefault
-olcaDataDir
C:\openlca
-olcaversion
1.4.1beta5
-vmargs
-Xmx3072M
-Dorg.openlca.core.updateSite=http://nexus.openlca.org/updateSite
```

Then, all new databases will be saved in the new folder. If other databases are already saved in Users, simply copy and paste them into the new folder. Then restart openLCA.