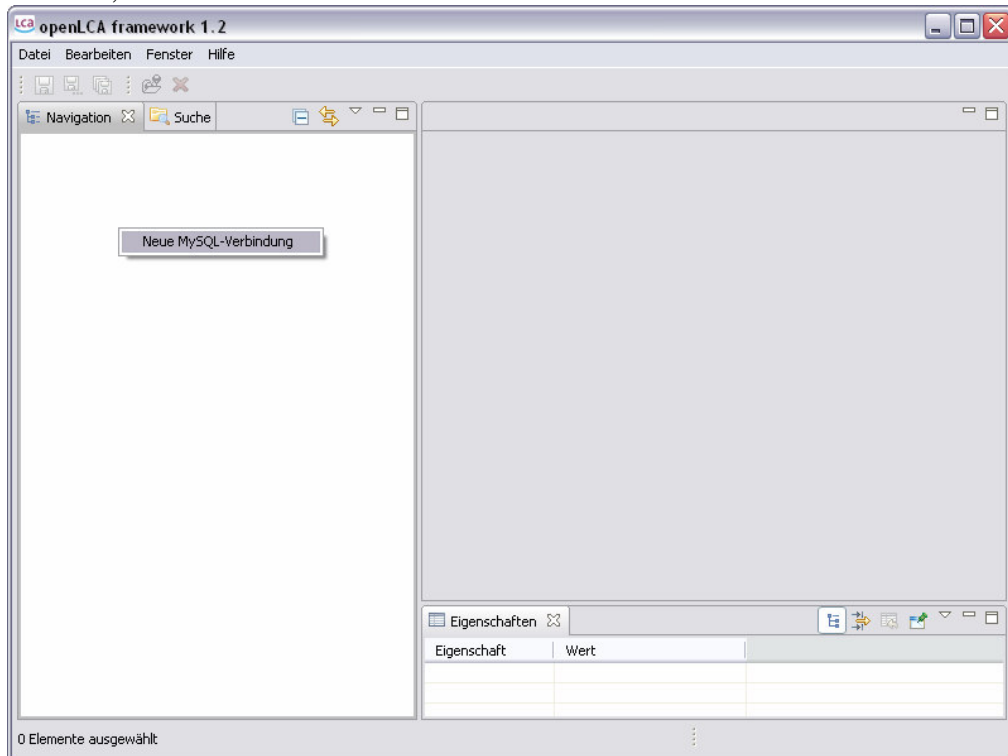


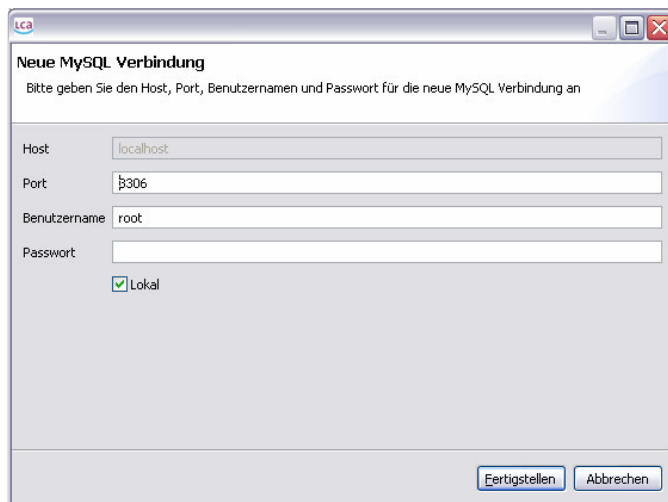
## How to work with databases in openLCA 1.2 – the first steps

Andreas Citroth, January 23, 2011

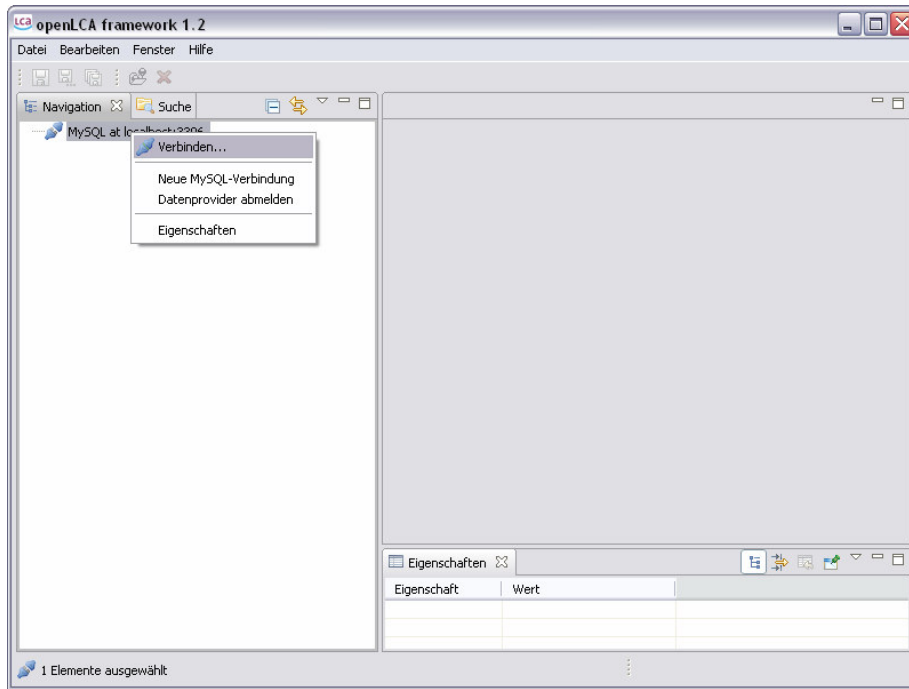
When you start openLCA for the first time, it looks quite empty. Right-click on the navigation window, ...



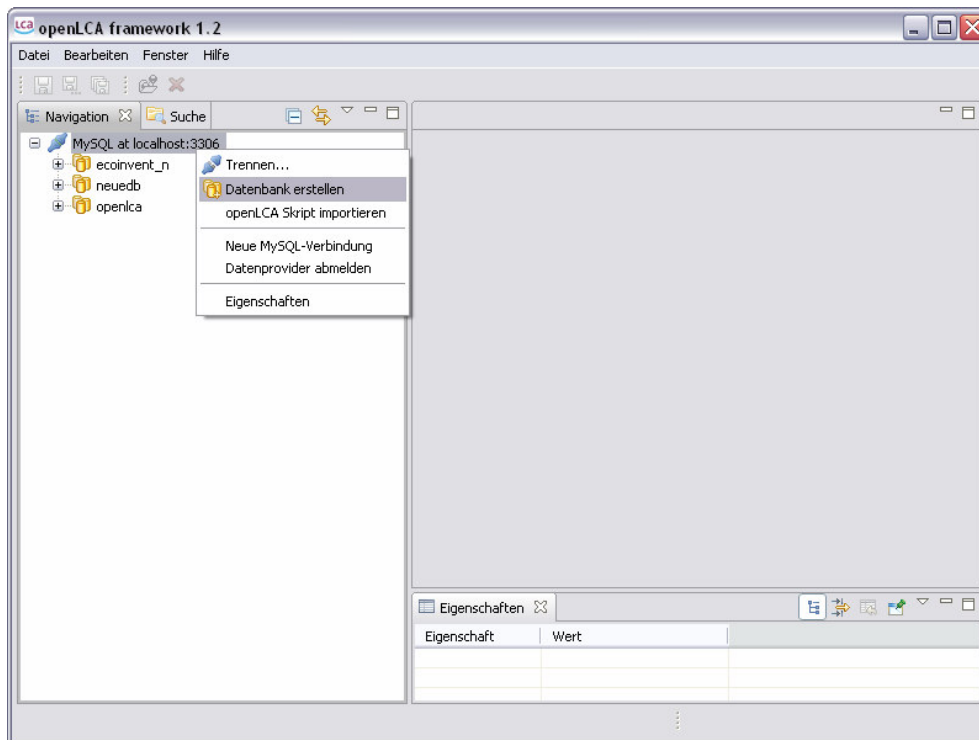
... create a new MySQL connection...



...accept the default settings...



..connect with the created MySQL connection...



...and then create a new database.

That's it! You can then import any datasets and databases that follow the ILCD or EcoSpold format.